

● VCC-7HD30S-3SMN

KEY FEATURES



- Zoom: Optical 30X
- TRUE Dual Output: 3G-SDI(1080p, 1080i)+IP
- SDI/HDMI resolution up to 1080p60, 1080i59.94
- IP resolution up to 1080P60. Supports H.264/265
- IP, 3G-SDI, HDMI, CVBS Simultaneously
- Control: RS232, RS422/485, IP/Onvif/Visca Over IP
- Image Stabilizer(30X) and True WDR 130dB
- RTSP, RTMP video streaming
- Power: 12VDC, PoE+

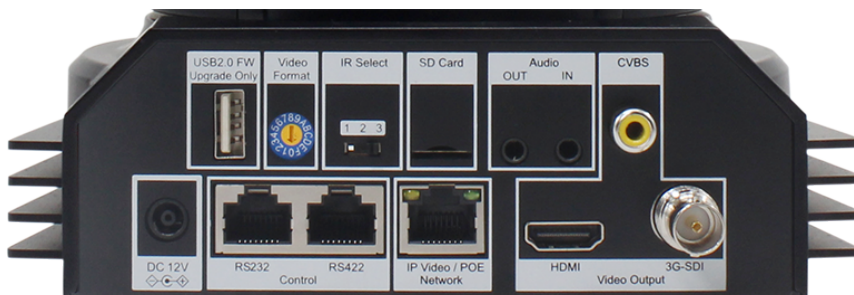
DESIGN



- High quality broadcast standard SDI video and extremely quiet and smooth Pan/Tilt movements ideal for broadcast, video conferencing, filming studios, churches and lecture halls, and for applications requiring high zoom ratios and variable slow speed controls
- Dual Output PTZ camera provides simultaneous 3G-SDI and IP video outputs with no latency and remote IP video streaming.
- It is a TRUE Dual Output PTZ where SDI and IP formats can be set independently. You can combine SDI 1080i(up to 1080i59.94) or 1080P with IP 1080P(up to 1080p60).
- The camera provides multiple methods of controlling: RS232, RS422 and IP control ONVIF, Visca over IP and CGI. It gives you capabilities of local control and remote control without distance limitations.

FUNCTIONALITY

- Ideal for video-conferencing, house of worship, broadcast, educational, environment, corporate training, distance learning applications.
- Comprehensive image parameter setting for broadcast and Pro AV applications.
- Adaptive speed for slow movement when running zoom-in application.
- Speeds of Pan/Tilt and Presets (0-5 level) are adjustable.
- IP protocol RTSP,RTMP for online video streaming.
- Control: RS232/RS422/RS485, IP/Onvif/Visca-Over-IP, IR Remote Controller.
- Image parameter setting restore with presets and quick access operation
- Power 12VDC and PoE (IEEE 802.3at)
- Firmware upgrade via USB2.0 or IP
- Standard mounting and ceiling mounting with E-Flip function



VCC-7HD30S-3SMN



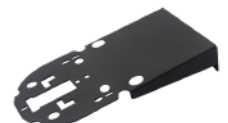
RJ45-RS422/232
VCC-CC45RS



RJ45-RS232
VCC-CC45232



VCC-CM



VCC-WM

Product Specification

Model No.	VCC-7HD30S-3SMN
Camera	30X
Image Sensor	1/2.8 inch CMOS 2.13MP
Lens	4.3~129mm
Digital Zoom	12X
Horizontal Angle of View	63.7°(W)~2.3°(T)
Aperture	F1.6(W)~F4.7(T)
Min. Illumination	Color: 0.01 lux (F1.6,AGC on,1/30s, High sensitive mode, 0.1 lux(F1.6,AGC on,1/30s, Normal sensitive mode)
Shutter Speed	1/1~1/10000s
Focus	Auto Focus(Triple/Interval), Manual Focus(Variable Speed), One Push Trigger, Near Limit,
White Balance	AUTO, ATW, Indoor, Outdoor, One Push WB, Manual WB, Outdoor Auto, Sodium Vapor Lamp (Fix/Auto/Outdoor Auto)
Exposure	Full Auto, Gain, Gain Limit, Shutter Priority, Iris Priority, Manual, Bright, Slow Shutter, Max/Min Shutter Limit, Slow AE
Features	High Sensitivity, Defog mode, Backlight Compensation, HLC, Flipper, Mirror
WDR	YES(130dB)
Defog	YES
E-FLIP	YES
Image Stabilizer	YES
Noise Reduction	On/Off (level 5 to 1 / Off, 6 steps), 2D/3D
S/N Ratio	≥50db
Mechanical	
Pan Movement	Horizontal:±350 degrees continuous pan (Zoom Adaptive Speed Range: 0.05°~100°/S)
Tilt Movement	Vertical:+90 degrees to -30 degrees (Zoom Adaptive Speed Range: 0.05°~50°/S)
Preset Position	128 (Speed adjustable: Up to 150°/S, 6 presets on remote controller.)
Preset Speed	0~5 Level Adjustable
Preset Memory	YES, (Preset Memory for image parameters)
Home Position	Support
Environmental	Indoor
Interface	
Video Output	SDI, HDMI, CVBS, IP Simultaneous
Video Format(HDMI)	1080p:60/59.94/50/29.97/30/25; 1080i:60/59.94/50; 720p:60/59.94/50/30/25
Video Format(CVBS)	720*576i50, 720*480i60
Audio I/O	Audio input x1, Audio output x1, 3.5mm audio jack (IP Models)
Control Interface	1XRJ45: IP; 2XRJ45: RS232/RS422/RS485, IR Remote Controller
Control Protocol	VISCA / Pelco D / IP Onvif 2.4 Profile S/ VISCA over IP
Edge Storage	Micro SD, Class 10, Up to 128GB (Beta)
System Upgrade	USB2.0 (for FW upgrade only), System upgrade via IP
3G-SDI Signal	
3G-SDI	Signal Fluctuations 800mv +/-10% (external cable extension requirements 75-5, 128 twisted pair shielding , coaxial cable)
Standard	SMPTE 292(1.5Gb/s), SMPTE 425-A(3Gb/s) With SMPTE352 SDI Metadata Supported
Signal Format	1080p:60/59.94/50/29.97/30/25; 1080i:60/59.94/50; 720p:60/59.94/50/30/29.97/25
Network	
Video Compression	MJPEG,H.264/H.265
IP Video Format	1080p:60/50/30/25; 720p:60/50/30/25 (True Dual Output : IP format can be set independently of SDI video format)
Protocols	IPv4,TCP,UDP,DHCP,RTP,RTSP,DNS,DDNS,NTP,FTP,UPnP,HTTP,SNMP,RTMP,SMTP,HTTPS
Multi-stream	3 data stream function will satisfy various bandwidth, frame rates and storage requirements in real time
Audio Compression	AAC-LC Broadband Audio Encoding(Duplex Communicate Supported,Audio/Video synchronization)
OSD	Customized OSD, Support custom LOGO insert
Compatible Integration	ONVIF2.4, VISCA Over IP
General	
Operating Temperature	-10 to +50 (°C)
Operating Humidity	≤80% Suitable for Use
Power Input	12VDC, PoE+ (IEEE 802.3at)
Power Consumption	Min: 12W(Static state with no movement); Max: 16W (Fully loaded operation)
Dimension	160x178x220mm
Weight	2.0kg
Body Color	Black, White

ORDER INFORMATION

- VCC-7HD30S-3SMN/B (SDI+HDMI+IP+CVBS, Black)
- VCC-7HD30S-3SMN/W (SDI+HDMI+IP+CVBS, White)
- VCC-WM (Wall Mount)
- VCC-CM (Ceiling Mount)
- VCC-CC45232 (RJ45 to RS232 8 Pin Mini Din Cable Adapter)
- VCC-CC45RS (RJ45 to RS422/232 Cable Adapter)